

OLT-P7X

汽保型干冰清洗机

Vapor preservation type dry ice cleaning machine

厦门欧睿拓科技有限公司

XIAMEN OLLITAL TECHNOLOGY CO., LTD.

干冰清洗解决方案

Dry ice cleaning solutions

干冰清洗设备专业制造商

Professional manufacturer of dry ice cleaning equipment

设备名称及规格型号：

Equipment name and specification model

(1) 商品名称：干冰清洗机

Trade name: dry ice cleaning machine

(2) 商品型号： OLT-P7X

Product Model： OLT-P7X

(3) 商品生产厂家：厦门欧睿拓科技有限公司

Commodity manufacturers: XIAMEN OLLITAL TECHNOLOGY CO., LTD.

人体工程学推杆

Ergonomic actuators

控制面板

Control Panel

高颜值外观

High-value appearance

万向轮

Universal Wheel



安全指示标识

Safety instruction signs

置物架

Shelf

气源接口 直连精密过滤器

Air source interface
Directly connected to the precision filter

收纳箱 避免杂乱摆放

Storage Boxes
Avoid clutter



主设备 (OLT-P7X) 技术性能：

Main Equipment (OLT-P7X) Technical Performance

功率Power	< 500W
电压Voltage	AC220V/50-60HZ
耗气量Air consumption	28-106CFM (0.8-3.0m ³ /min)可调, 在 80PSI (5.5 bar)下 28-106CFM (0.8-3.0m ³ /min) adjustable at 80PSI (5.5 bar)
供气压力Air supply pressure	0.1-0.9Mpa (1-9bar可调adjustable)
送冰速度Speed of ice delivery	0-1.65 lbs/min (0-0.75Kg/min)可调adjustable
料斗容量Hopper capacity	23.5 lbs(10.5Kg)
防护等级Protection level	IP54
净重 weight	121Lbs(55Kg)
干冰状态Dry ice state	2.5-3mm (颗粒状Granular)
驱动方式Drive method	直联Direct link
外形尺寸Dimension	(L)510x(W)460x(H)960



型号：P7X

Straight-through air system design, with "zero" obstruction to the dry ice injection port, improves compressed air utilization. The current advanced air-mixing structure of the machine head effectively controls the pressure loss within 8%, reducing air loss while increasing the injection pressure. The back storage box design can reasonably store equipment accessories, showing the lean design concept and easy storage of equipment. The final integrity is strong to avoid clutter at the workstation. A filter is installed on the air inlet end, and the dry compressed air reduces the chance of ice blockage during the injection process. Exquisite appearance design enhances the professionalism and beauty of the workshop.

标准配件：



出冰管
Ice outlet pipe

进气管
Air inlet pipe

防护面罩
Protective masks

耳罩
Earmuffs

备用开关
Spare switch

防护手套
Protective gloves

地线夹
Ground clamp

冰铲
Ice shovel

包含配件Accessories included:

- 1.干冰清洗机*1台;
Dry ice cleaning machine * 1 unit.
- 2.长柄握把1支;
1 long handle grip.
- 3.不锈钢喷嘴4支;
Pieces of stainless steel nozzles.
- 4.铜管1根;
1 copper pipe.
- 5.直角快速接头1个;
1 right angle quick coupling.
- 6.喷冰管DN15*1条3米;
Ice spray pipe DN15*1 3m.
- 7.供气防爆管DN20*1条10米;
Gas supply explosion-proof pipe DN20*1 article 10 meters.
- 8.冰铲1个;
1 ice shovel.
- 9.头盔、耳罩、手套各1个;
1 helmet, earmuffs and gloves each.
- 10.备用按钮开关1根;
1 spare button switch.
- 11.挡冰护套1个;
1 ice retaining sheath.
- 12.地线夹1根。
Ground wire clip.



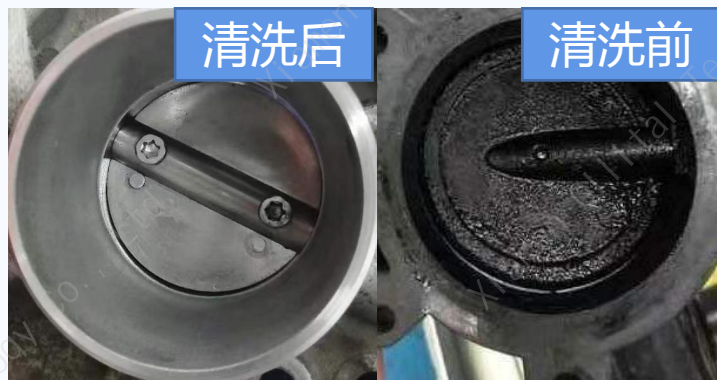
清洗案例展示

Cleaning case show

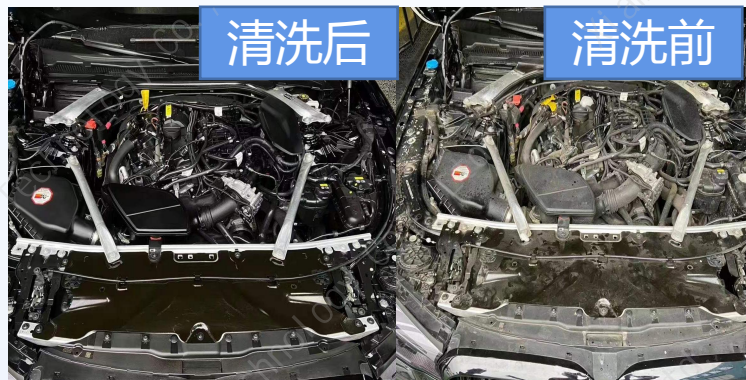
汽车燃烧室
Automotive combustion chamber



汽车节气门
Car Throttle



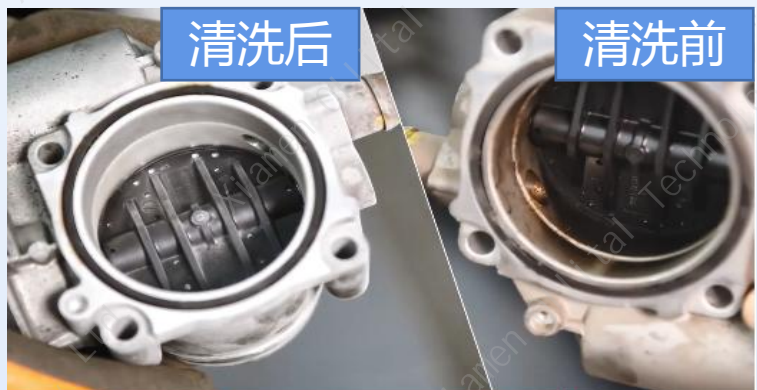
汽车发动机舱
Car engine compartment



汽车进气歧管
Car intake manifold



汽车节气门
Car Throttle



汽车轮毂
Car Wheels



OLT-P7X设备技术参数 PQ-P7X equipment technical parameters :

主要由控制模块、保护模块、输送装置、震动防堵塞模块、干冰料仓、喷冰管和手柄喷枪套装。

It mainly consists of control module, protection module, delivery device, vibration anti-clogging module, dry ice bin, ice blasting tube and handle gun set.

设备的稳定性、操作型、保养性、灵活性说明

Description of equipment stability, operation type, maintainability, and flexibility

1. 操作手柄上装有防呆保护开关，操作安全，喷冰、喷气自由切换；
2. 干冰专用低温软管，匹配快速接插头，耐高压，耐低温，耐曲挠，提高了软管的灵活性和弯曲半径，使最终用户能够更舒适地清洁头顶和更苛刻的角度；
3. 静电保护功能；
4. 整机标准电气元器件及标准件均采用一线品牌产品，零部件均为精密加工；
5. 喷冰过程连续顺畅，手持部件符合人体工学设计，操作面板简单，易上手；
6. 整机外壳与结构均为不锈钢材质，经久耐用；
7. 配电箱传统干冰清洗机不同，独立空间设计保证用电安全与耐久性；免维护设计，并且性能与质量稳定性保证。

1. anti-dulling protection switch on the operating handle for safe operation and free switching of ice and air blasting.

2. special low-temperature hose for dry ice, matching the quick connect plug, high pressure resistance, low temperature resistance, resistance to curved radius, improving the flexibility and bending radius of the hose, enabling the end user to clean the top of the head more comfortably and at a more demanding angle.

3. electrostatic protection function.

4. the standard electrical components and standard parts of the whole machine are all first-tier brand products, and the parts are precision machined.

5. continuous and smooth ice spraying process, ergonomic design of the handheld components, simple and easy to use operating panel.

6. The whole machine shell and structure are made of stainless steel, durable.

7. Distribution box traditional dry ice cleaning machine is different, independent space design to ensure the safety and durability of electricity; maintenance-free design, and performance and quality stability assurance.