

# OLT-P60

## INDUSTRIAL DRY ICE CLEANING MACHINE

**OLLITAL**

[WWW.OLLITAL.COM](http://WWW.OLLITAL.COM)

**厦门欧睿拓科技有限公司**

Xi amen OLLITAL Technology Co., Ltd.

---

## Equipment name and specifications :

- (1) Product name: Dry ice cleaning machine
- (2) Product model: OLT-P60
- (3) Product manufacturer: Xiamen OLLITAL Technology Co., Ltd.



## Main equipment (OLT-P60) technical performance:

Model	P60
Air consumption	0.5-1.0m <sup>3</sup> /min
Injection pressure	4.0-6.0bar
Dry ice consumption	0.1-0.5KG/min
Hopper capacity	4kg
Air inlet connector	1/4 quick coupling
Equipment weight	15kg
Dimension	49*28.5*31.5cm
Air ducts	12mm*8mlong/2pcs
Spraying dry ice pellets	0.5-2.0mm(granular)



Model: A625i



## Standard accessories:



Ice outlet pipe   Intake tube   Protective mask   Earmuffs   Static clamp   Button switch   Protective gloves   Ice shovel

## Accessories included:

1. Industrial dry ice cleaning machine\*1 set;
2. 1 handle;
3. 1 aerodynamic nozzle;
4. Ice spray pipe DN20\*1 5 meters;
5. Gas supply explosion-proof pipe DN25\*1 10 meters;
6. 1 ice shovel;
7. 1 helmet, 1 earmuff, and 1 glove each;
8. 1 spare button switch;
9. 1 power cord;
10. 1 ground wire clip.

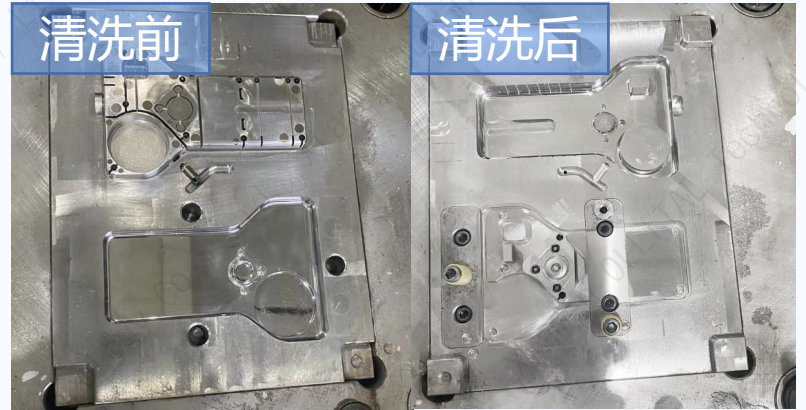


# Cleaning case display

## Shoe mold cleaning



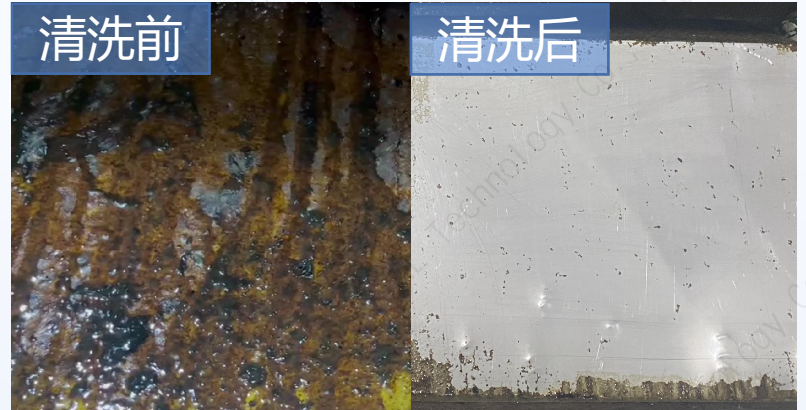
## Injection mold cleaning



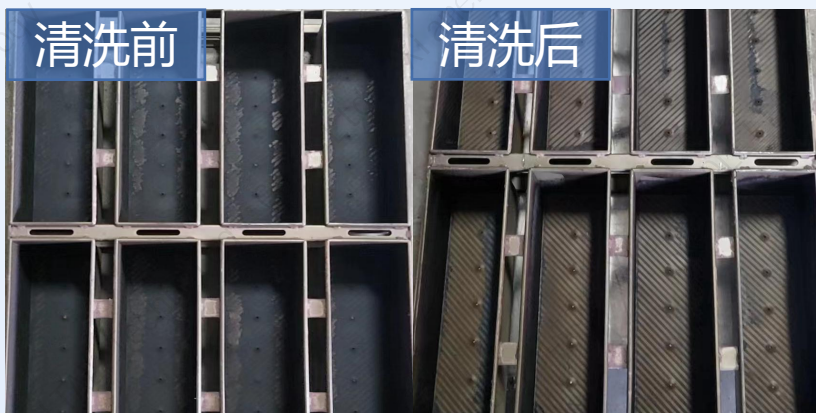
## Motor winding cleaning



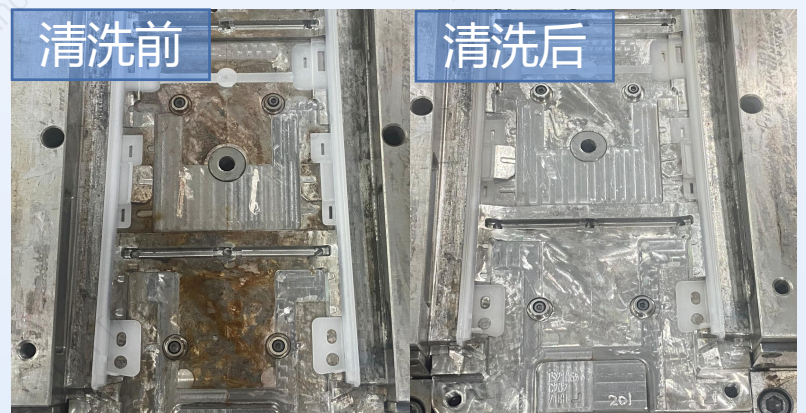
## Heavy oil stain cleaning



## Cake mold cleaning



## Injection mold cleaning



OLT-A625i equipment technical parameters:

It mainly consists of control module, protection module, conveying device, vibration and anti-clogging module, dry ice silo, ice spray pipe and handle spray gun set.

Description of equipment stability, operability, maintainability, and flexibility

1. The operating handle is equipped with an anti-fool protection switch, which is safe to operate. It can switch freely between ice spray and air jet, and is equipped with an illumination light;
2. Special low-temperature hose for dry ice, matching quick-connect plug, resistant to high pressure, low temperature, and bending, which improves the flexibility and bending radius of the hose, allowing end users to clean the top of their heads and at more demanding angles more comfortably.
3. Static electricity protection function;
4. The standard electrical components and standard parts of the whole machine are all first-line brand products, and the parts are precision processed;
5. The ice spraying process is continuous and smooth, the hand-held parts are ergonomically designed, and the operation panel is simple and easy to use;
6. The whole machine The shell and structure are made of stainless steel and are durable.
7. Different from traditional dry ice cleaning machines for distribution boxes, the independent space design ensures the safety and durability of electricity; the maintenance-free design ensures performance and quality stability.