

OLT-A625i

INDUSTRIAL DRY ICE CLEANING MACHINE

OLLITAL

WWW.OLLITAL.COM

厦门欧睿拓科技有限公司

Xi amen OLLITAL Technology Co., Ltd.

Equipment name and specifications :

- (1) Product name: Dry ice cleaning machine
- (2) Product model: OLT-A625i
- (3) Product manufacturer: Xiamen OLLITAL Technology Co., Ltd.



Main equipment (OLT-A625i) technical performance:

功率 Power	0.75KW
电压 Voltage	AC220V/50-60HZ
耗气量 Air consumption	106-283CFM (3-8m ³ /min)可调 Adjustable, At 80PSI (5.5 bar)
供气压力 Air supply pressure	0-1.6Mpa (0-16bar可调 Adjustable)
送冰速度 Ice delivery speed	0-7.9 lbs/min (0-3.6Kg/min)可调 (Adjustable)
料斗容量 Hopper capacity	25Kg
防护等级 Protection level	IP54
净重 weight	143lbs(65Kg)
干冰状态 Dry ice state	2.5-3mm (颗粒状 Granular)
驱动方式 Drive method	直联 Direct link
外形尺寸 Dimension	(L)440x(W)680x(H)780mm



Model: A625i

It adopts a special rotary feeding design, vibrating ice delivery, and special spray gun design. It is widely used in cleaning printing industry, shoe molds, electric power industry, petrochemical industry, aerospace industry and other fields, and can be operated with ease. The spray gun cables are all 24V power supply, which is very safe. The spray gun and the spray gun nozzle are connected by a quick-change type, and the spray gun nozzles of various lengths and shapes can be replaced at will to meet different cleaning parts. Different spray gun nozzles can be made according to the actual situation of the user; air intake hose interface, spray gun hose The interface and gun control cable are all threaded, with high connection reliability and easy removal.

Standard accessories:



Ice outlet pipe Intake tube Protective mask Earmuffs Static clamp Button switch Protective gloves Ice shovel

Accessories included:

1. Industrial dry ice cleaning machine*1 set;
2. 1 handle;
3. 1 aerodynamic nozzle;
4. Ice spray pipe DN20*1 5 meters;
5. Gas supply explosion-proof pipe DN25*1 10 meters;
6. 1 ice shovel ;
7. 1 helmet, 1 earmuff, and 1 glove each;
8. 1 spare button switch;
9. 1 power cord;
10. 1 ground wire clip.



Other applications of dry ice blasting in industrial industries

petrochemical industry	Printing industry	Power Industry
Aerospace	Rubber tires	Die casting industry
Automobile industry	Food Industry	engineered wood
Plumbing	boiler	Mold industry

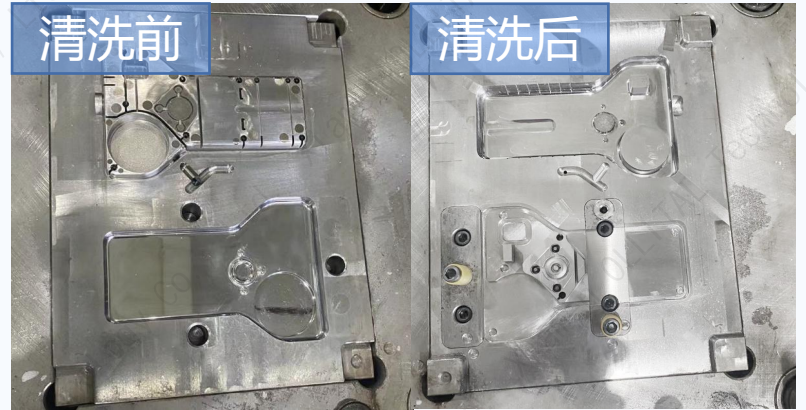
1. Clean molds in automobile manufacturing, deburr and spray paint automobile plastic parts;
2. The printing industry mainly cleans ink, as well as noise, handwriting, etc. during the printing process;
3. The machine industry mainly cleans oil stains and dust, deburrs parts, removes spray paint, etc.;
4. Optical parts manufacturing cleaning molds, panel cleaning, UV curing resin removal, etc.;
5. The railway industry cleans railway car bogies, gearboxes, wheels, rails, etc.;
6. Maintenance of vending machines, cleaning dust and grease from vending machines;
7. Airport cleaning runway lighting public application measures, etc.;
8. The tobacco industry mainly cleans dirt on the production line;
9. The power industry mainly cleans gas turbines, blowers, substations, etc. for thermal power generation;
10. Plywood manufacturing industry, cleaning plywood floors and other surface treatments;
11. Food processing and molding mainly cleans residues, grease, molds, sugar, etc. that adhere to the production line. It can also be used to clean kitchen equipment, etc.;

Cleaning case display

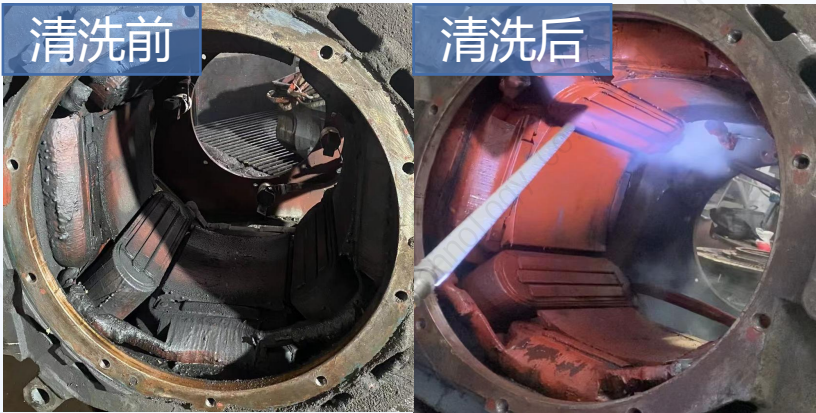
Shoe mold cleaning



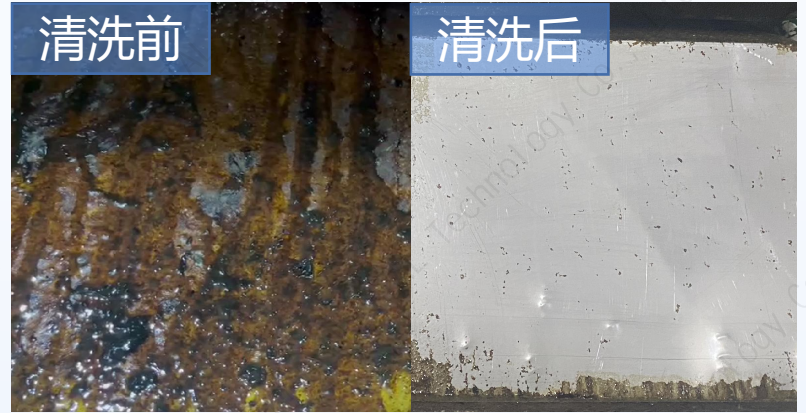
Injection mold cleaning



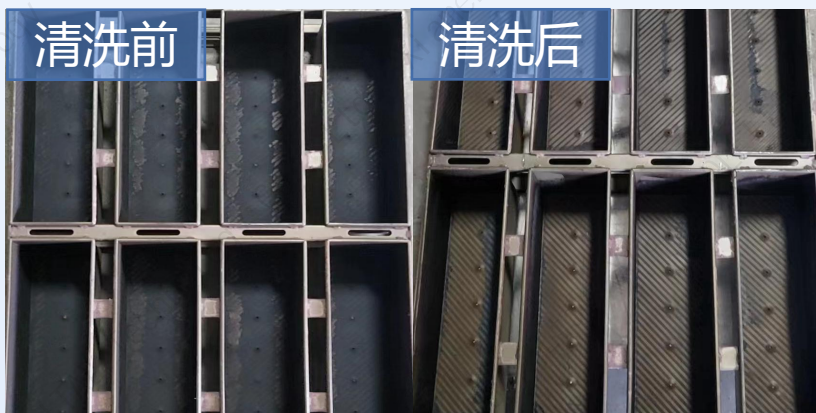
Motor winding cleaning



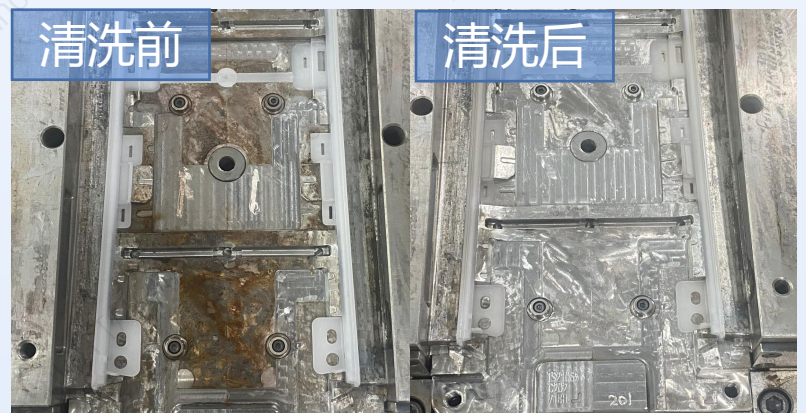
Heavy oil stain cleaning



Cake mold cleaning



Injection mold cleaning



OLT-A625i equipment technical parameters:

It mainly consists of control module, protection module, conveying device, vibration and anti-clogging module, dry ice silo, ice spray pipe and handle spray gun set.

Description of equipment stability, operability, maintainability, and flexibility

1. The operating handle is equipped with an anti-fool protection switch, which is safe to operate. It can switch freely between ice spray and air jet, and is equipped with an illumination light;
2. Special low-temperature hose for dry ice, matching quick-connect plug, resistant to high pressure, low temperature, and bending, which improves the flexibility and bending radius of the hose, allowing end users to clean the top of their heads and at more demanding angles more comfortably.
3. Static electricity protection function;
4. The standard electrical components and standard parts of the whole machine are all first-line brand products, and the parts are precision processed;
5. The ice spraying process is continuous and smooth, the hand-held parts are ergonomically designed, and the operation panel is simple and easy to use;
6. The whole machine The shell and structure are made of stainless steel and are durable.
7. Different from traditional dry ice cleaning machines for distribution boxes, the independent space design ensures the safety and durability of electricity; the maintenance-free design ensures performance and quality stability.